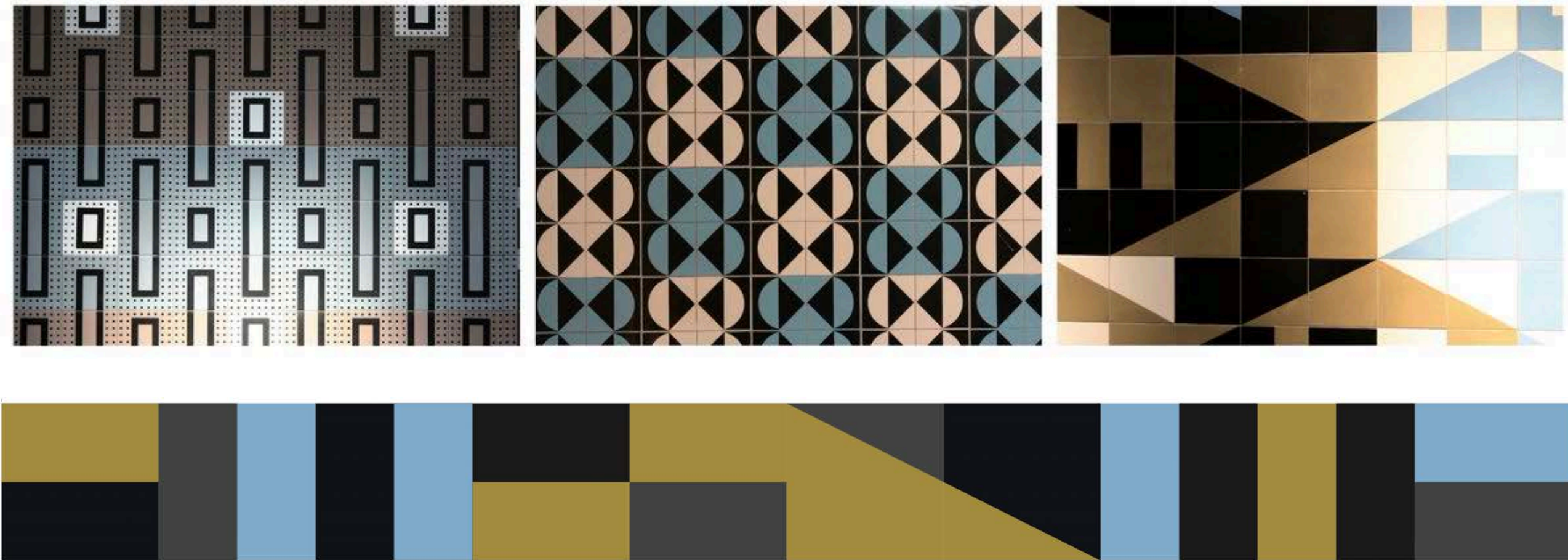


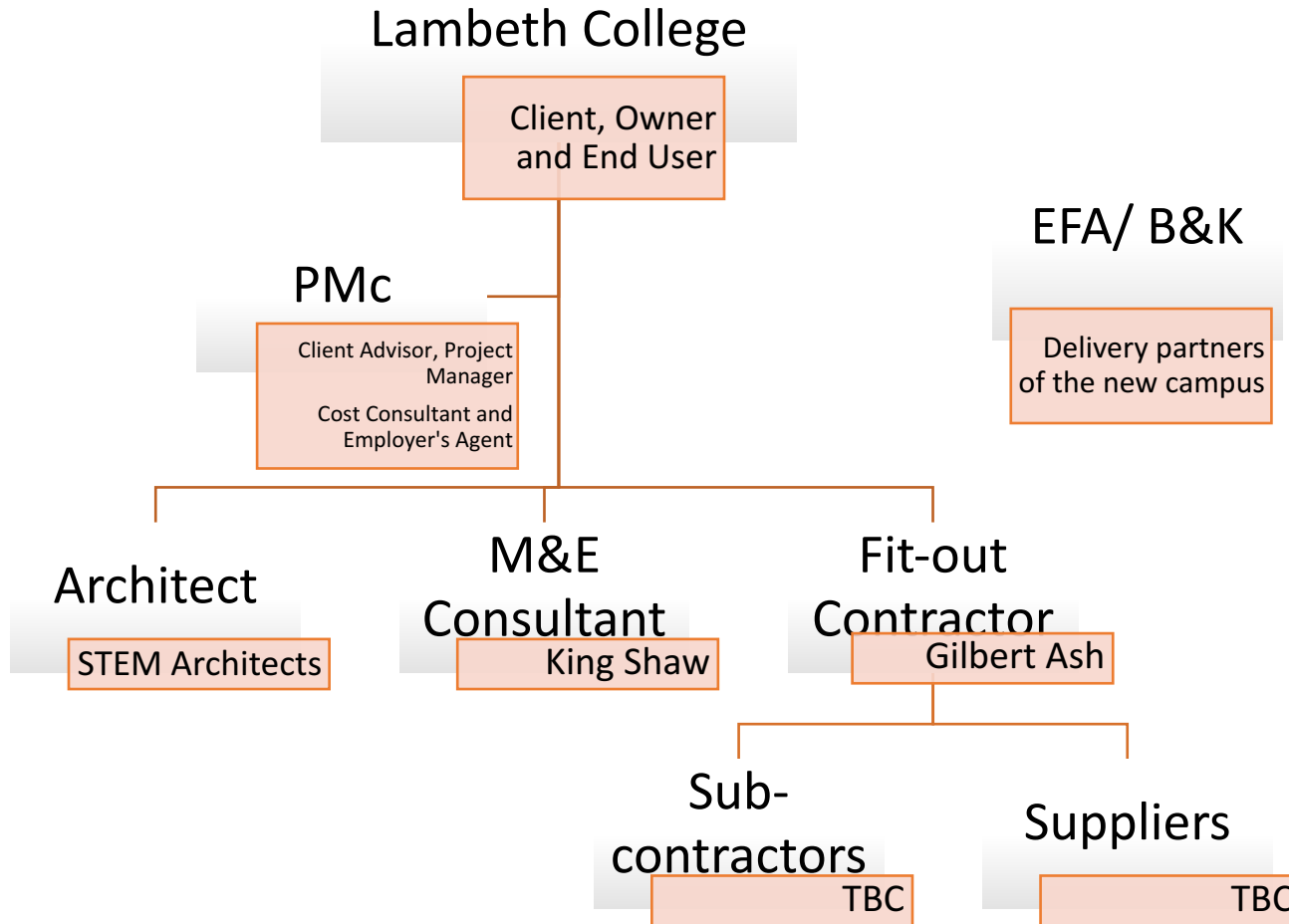
WELCOME TO LAMBETH COLLEGE STAFF TO YOUR NEW BRIXTON HILL CAMPUS



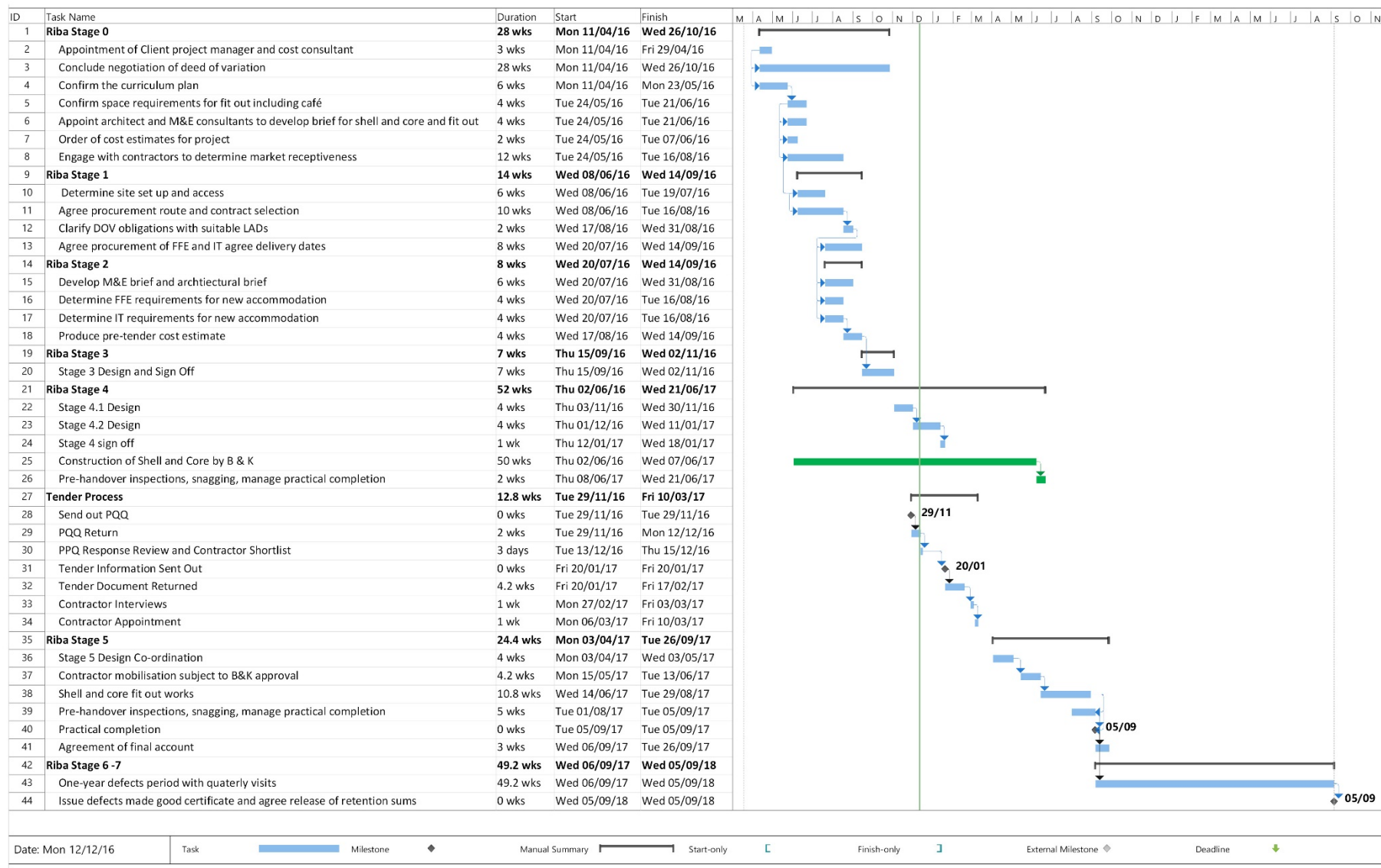


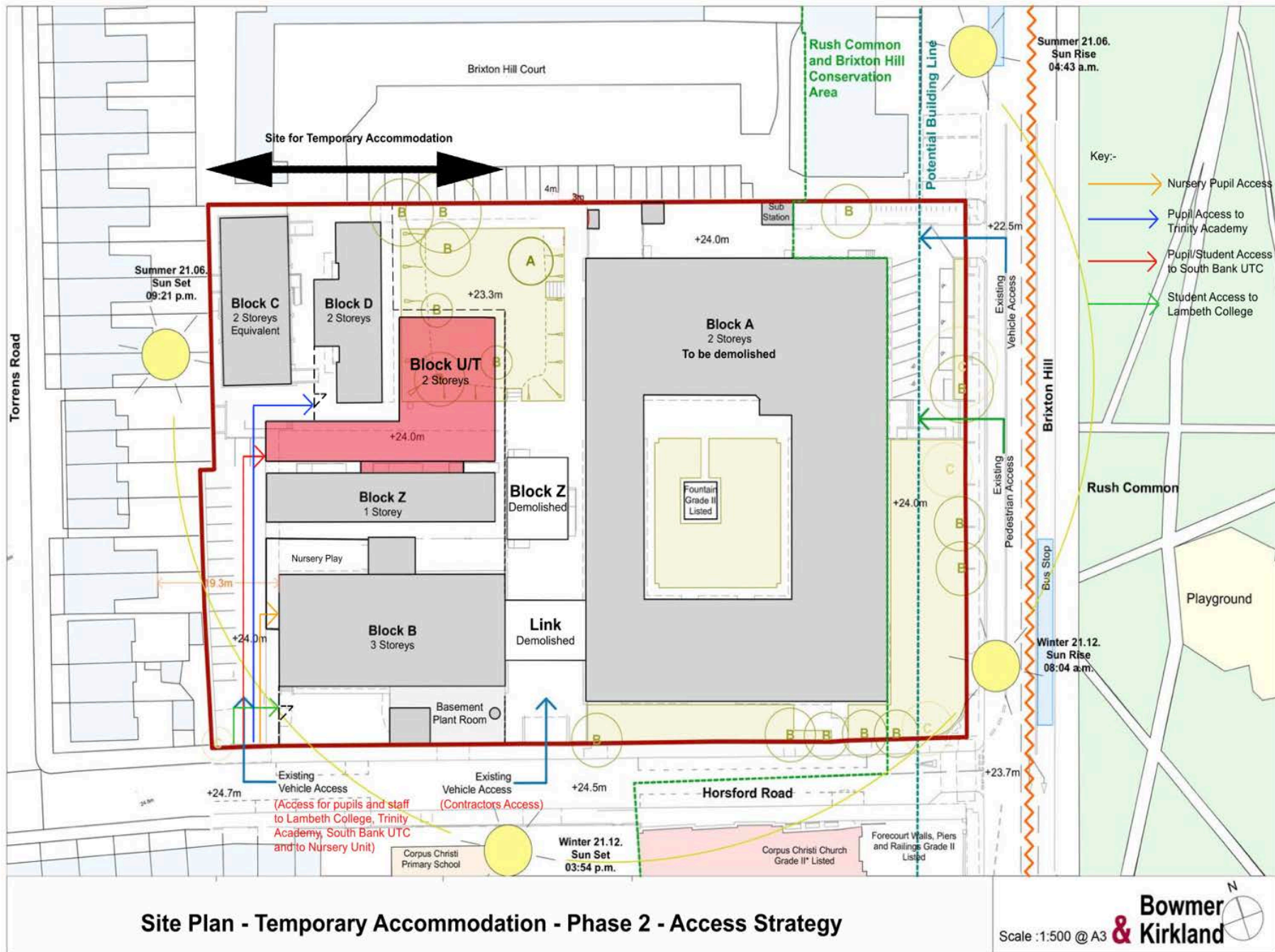
- PETER MARSH
- MOHAMMED POSWALL
- MICHAEL PALTRINIERI
- GEORGE KENCHINGTON

PROJECT DIRECTOR
PROJECT MANAGER
PROJECT MANAGER
ASSISTANT PROJECT



With thanks to Lambeth
College Estates & IT teams –
Steve, Tom and all!



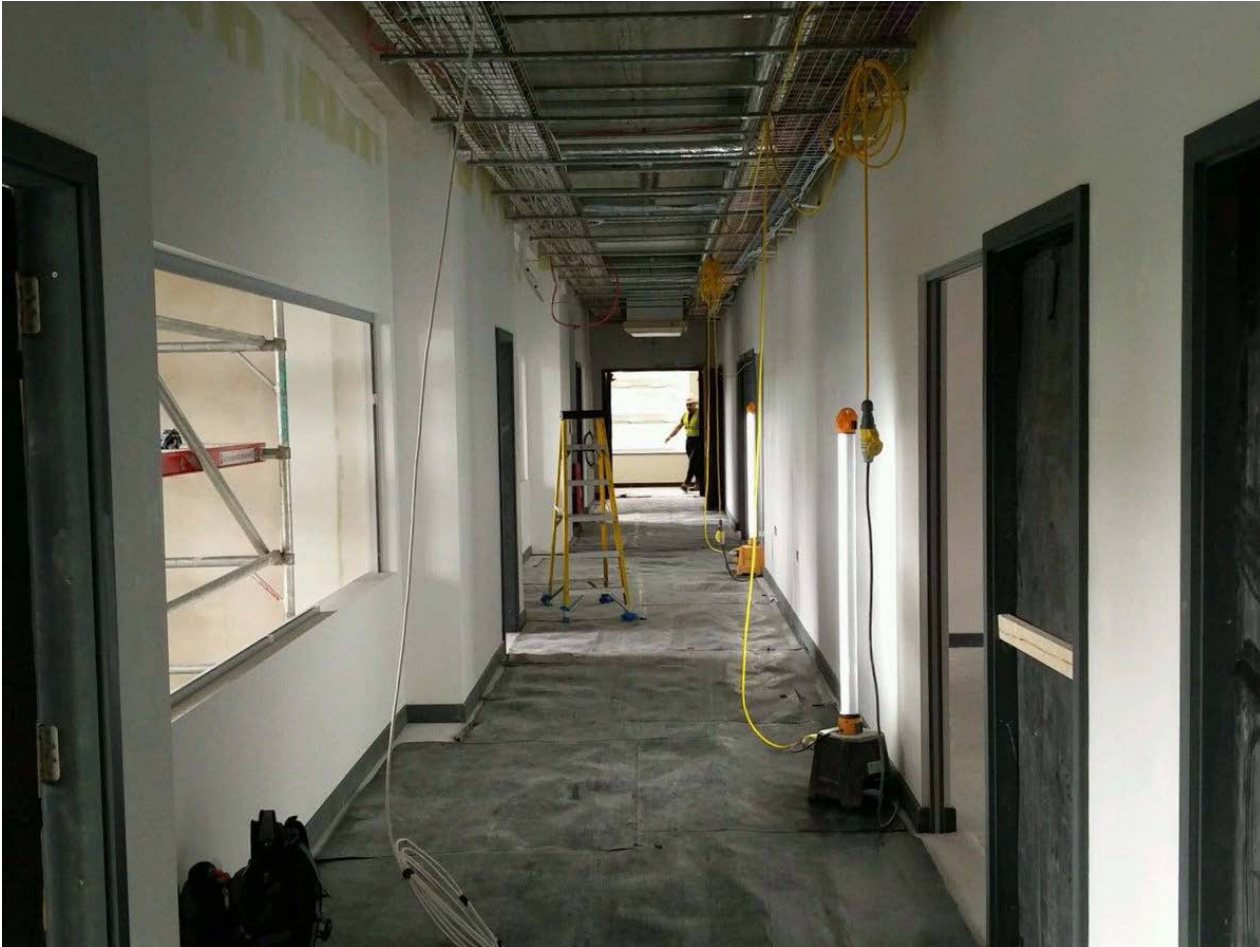
















All personnel must sign in and report to Site Office for induction



Wszyscy pracownicy muszą się zarejestrować i zgłosić do Urzędu strony do indukcji

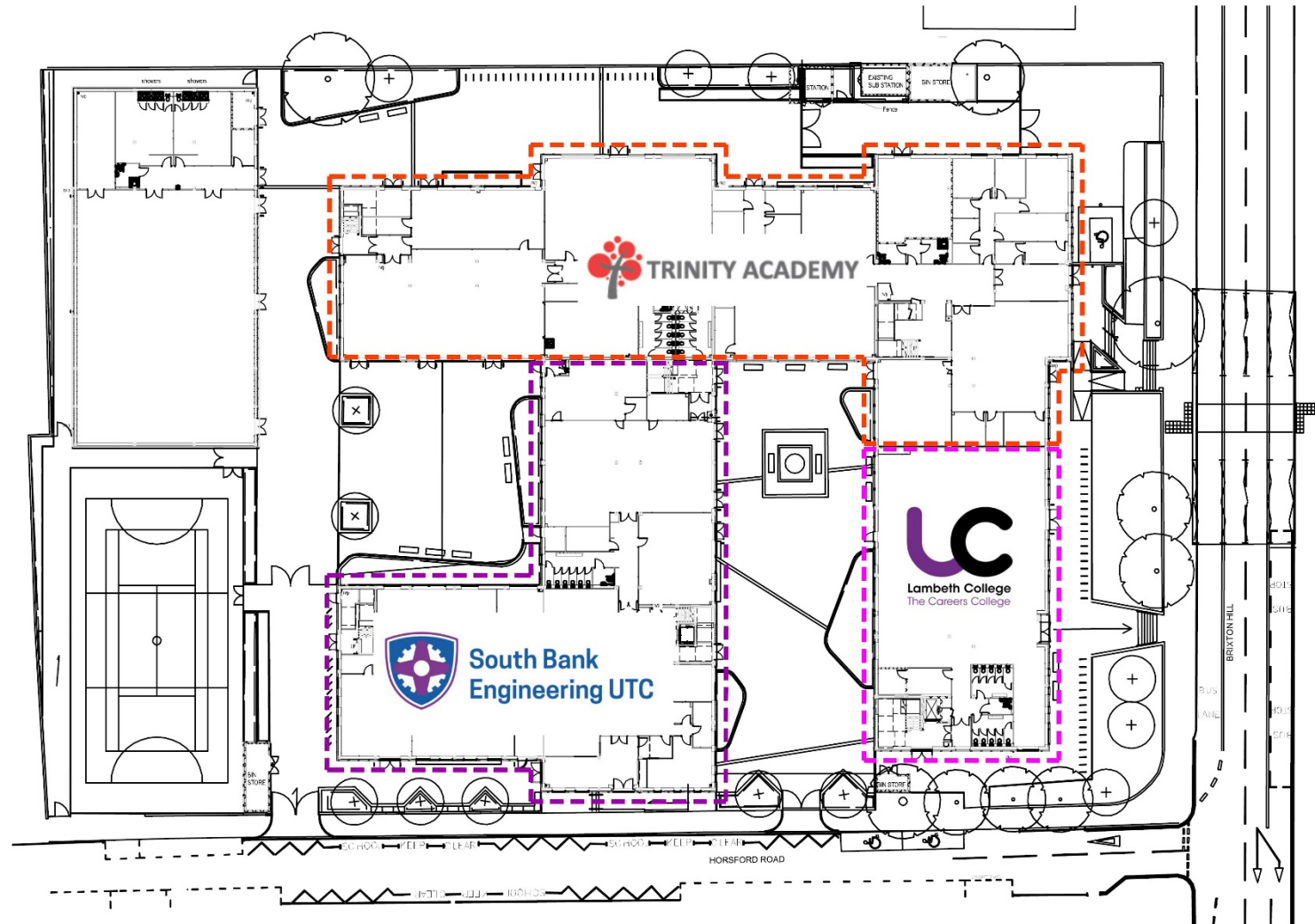


Toți membrii personalului trebuie să semneze în raport și în Office Site-ul pentru inducție.

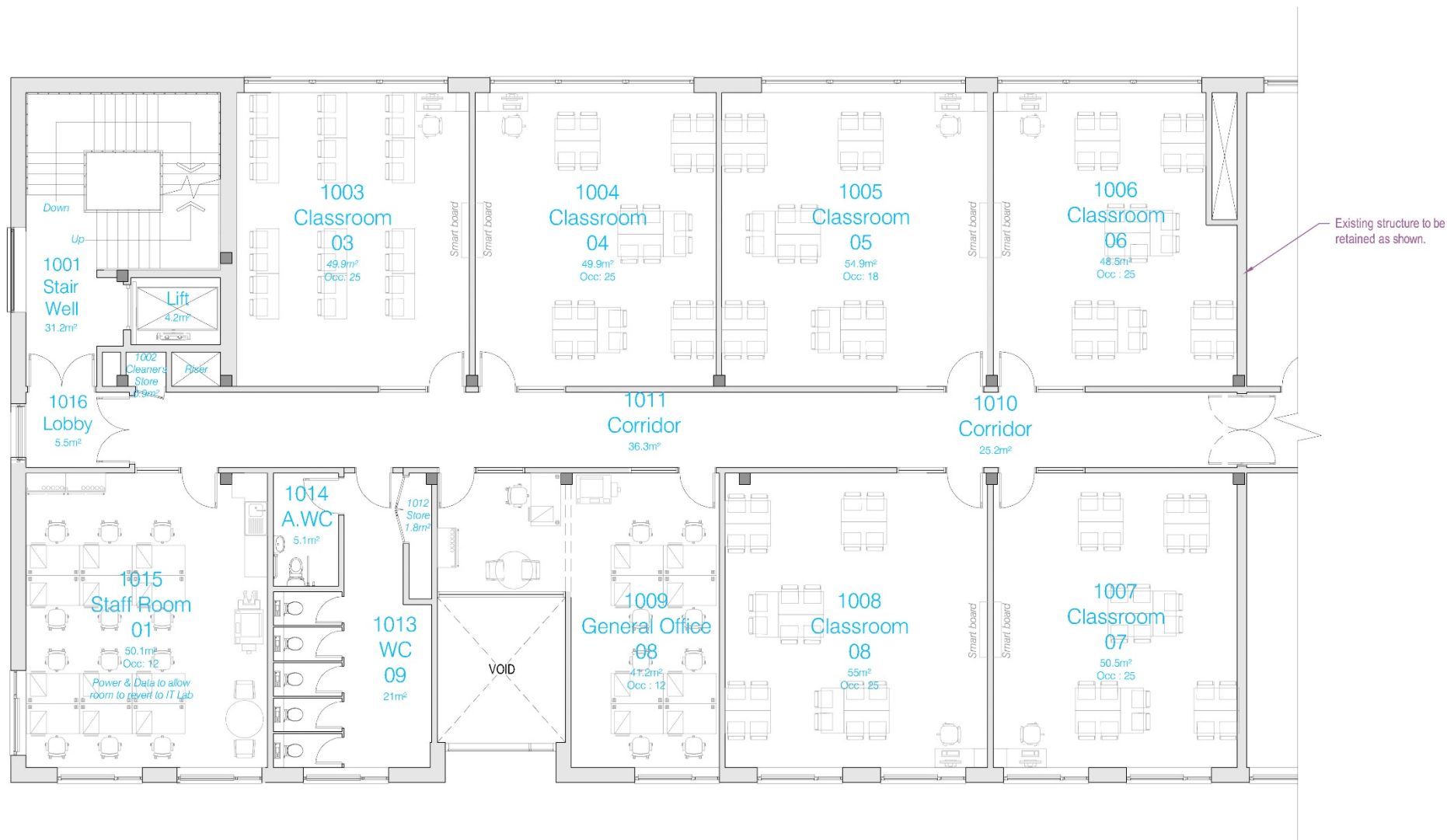


Visi darbinieki ir jāpierakstās un ziņo Site biroju indukciju.

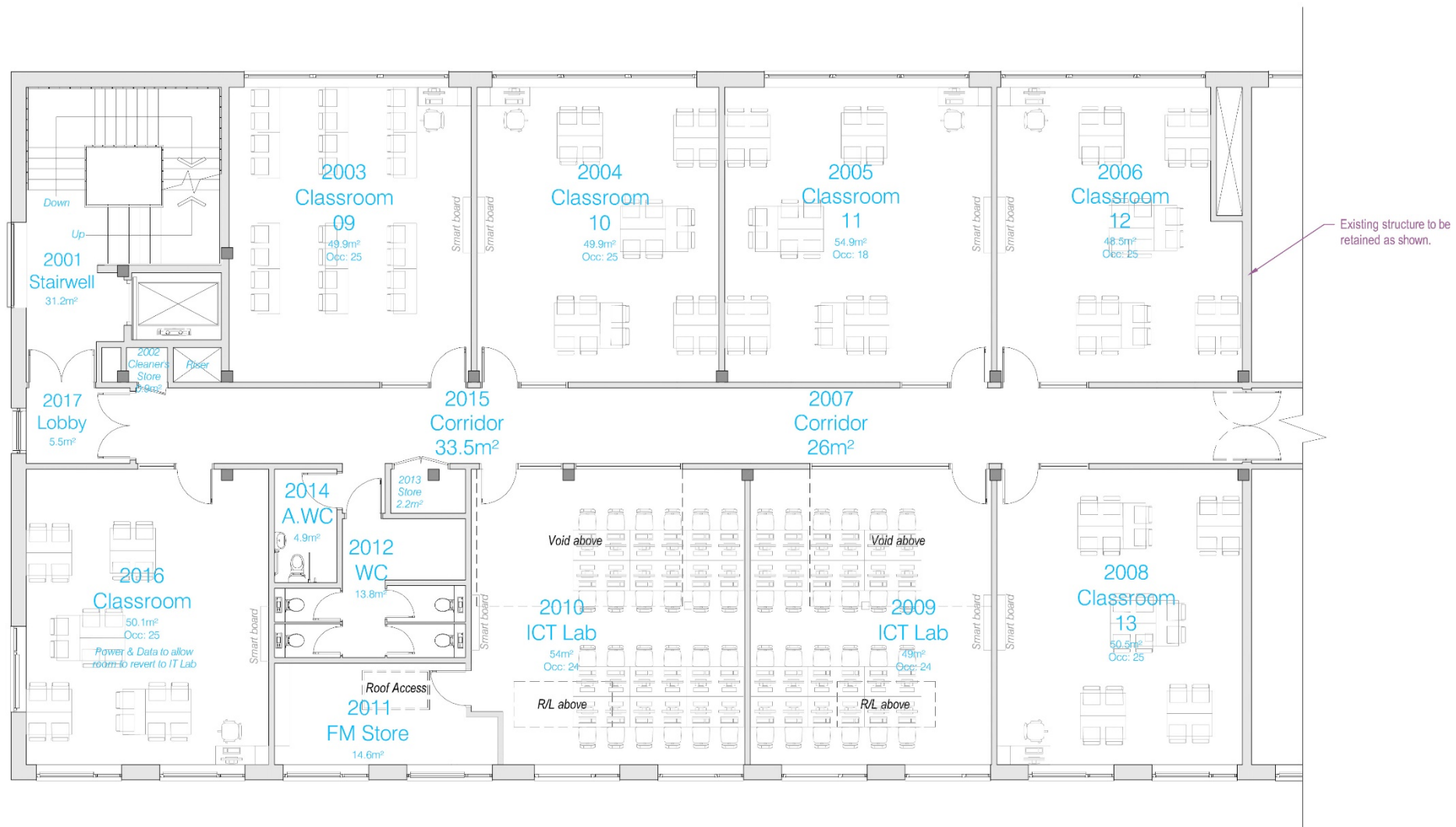


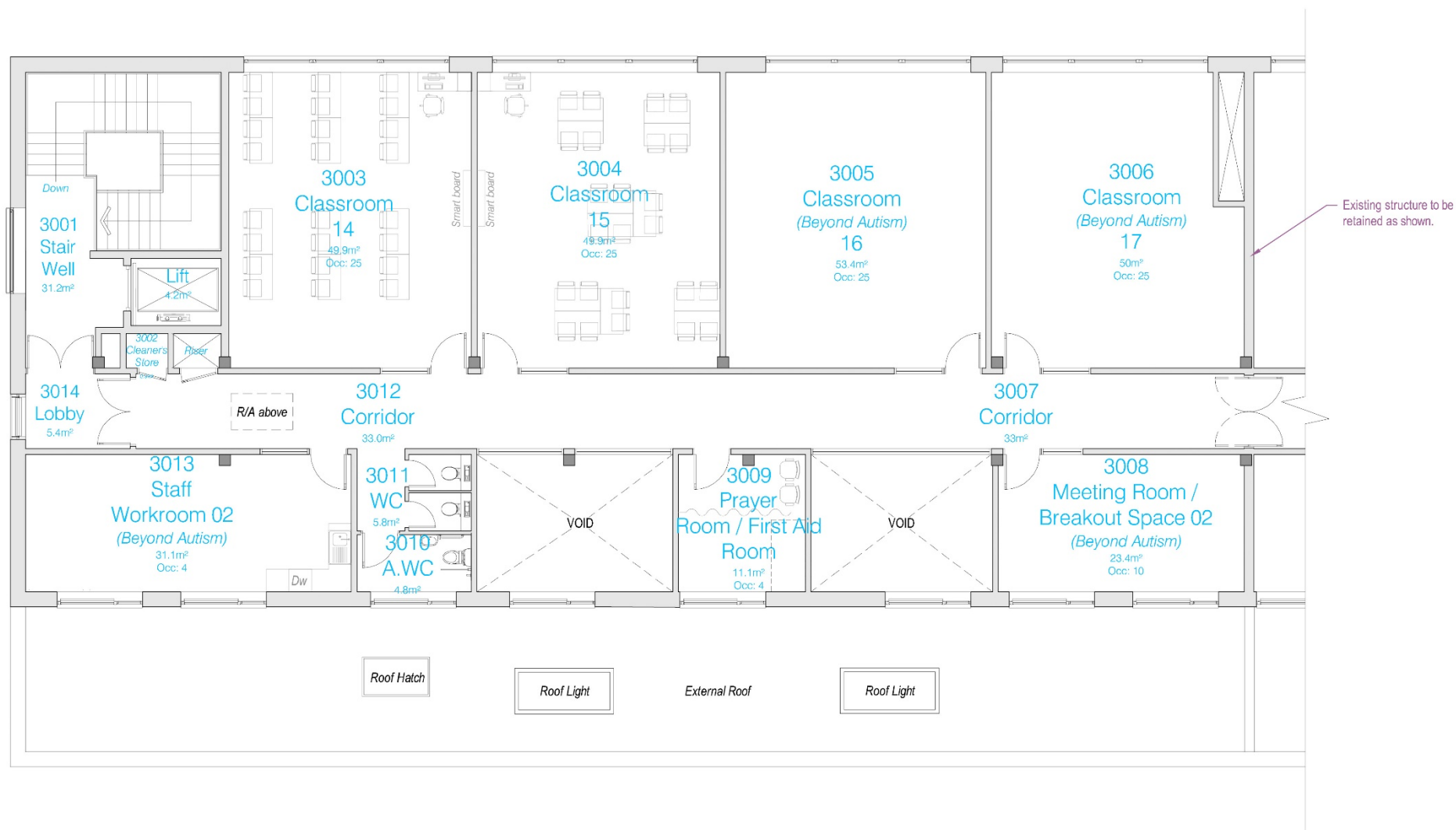








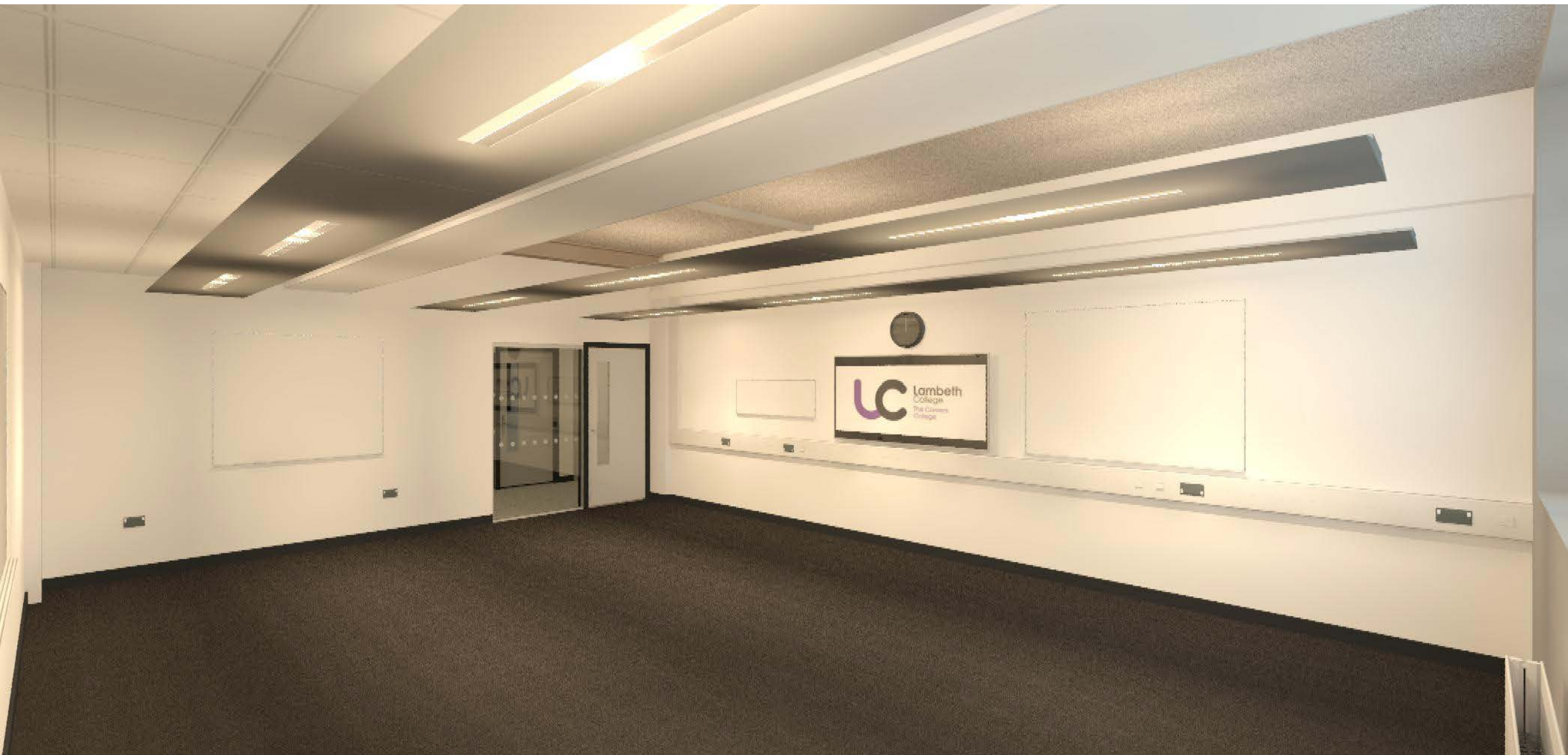


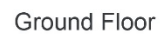






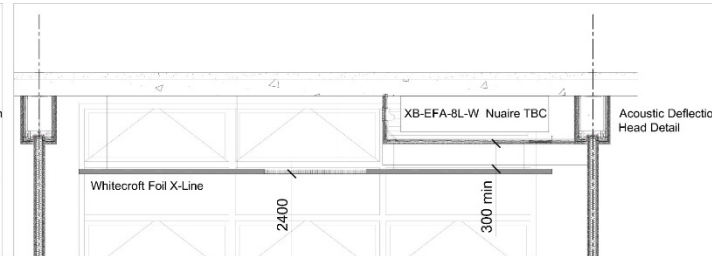
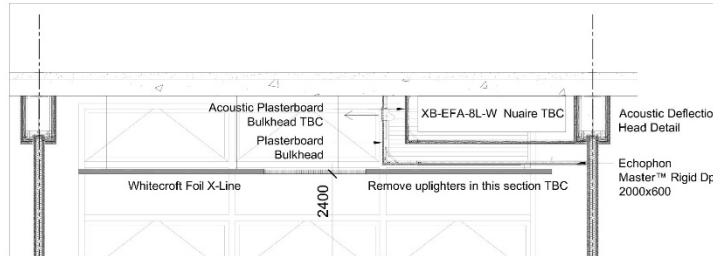




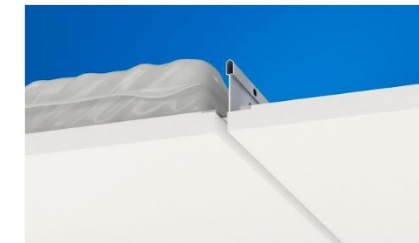
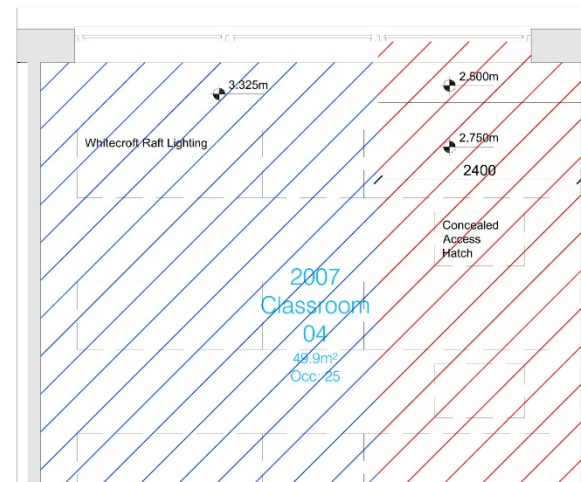
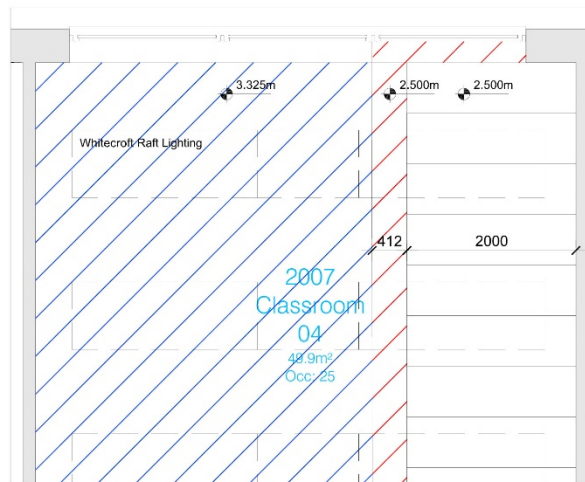


Colour: 4701 Anthracite

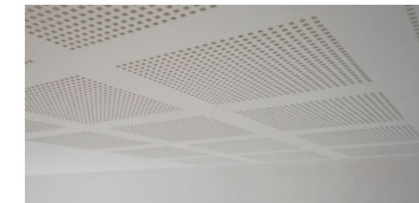
- | | |
|---|--|
|  | Carpet Tiles - M50:130C |
|  | Slip Resistant Vinyl - M50:150D |
|  | Plain Colour Vinyl - M50:150A |
|  | High Spec Vinyl - Colour 1 - M50:150B |
|  | High Spec Vinyl - Colour 2 - M50:150C |
|  | Barrier Matting - M50:135A |
|  | Kitchenette Vinyl - M50:150E |
|  | Provided as part of Shell & Core Works |



Whitecroft Raft Lighting



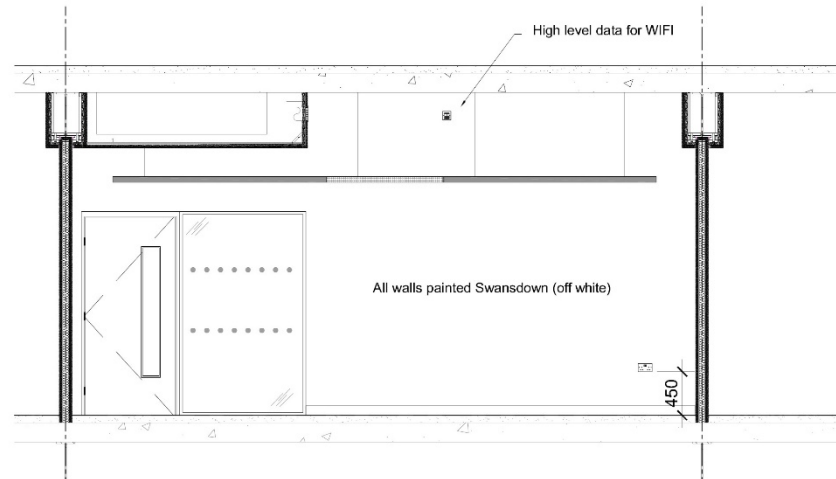
Option 1 - Ecophon Master Rigid Dp



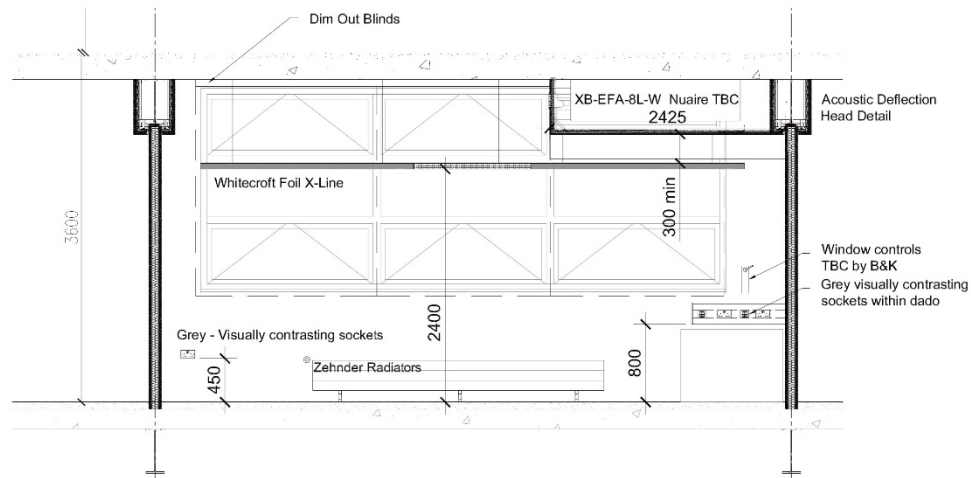
Option 2 - Pregybel Acoustic Plasterboard

Option 1 - Ceiling Bulkhead with Acoustic Tiles

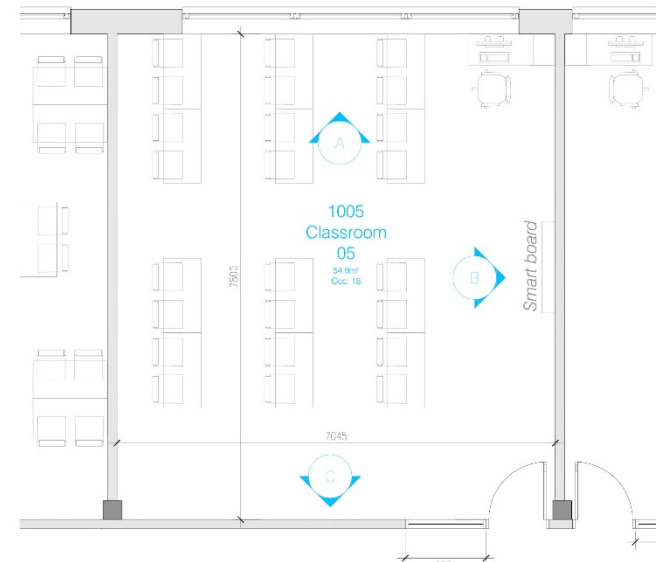
Option 2 - Acoustic Plasterboard Ceiling Bulkhead



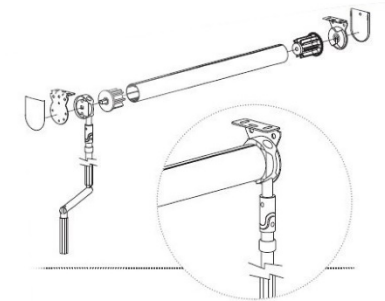
Elevation C - Corridor Wall Elevation
Scale 1:50



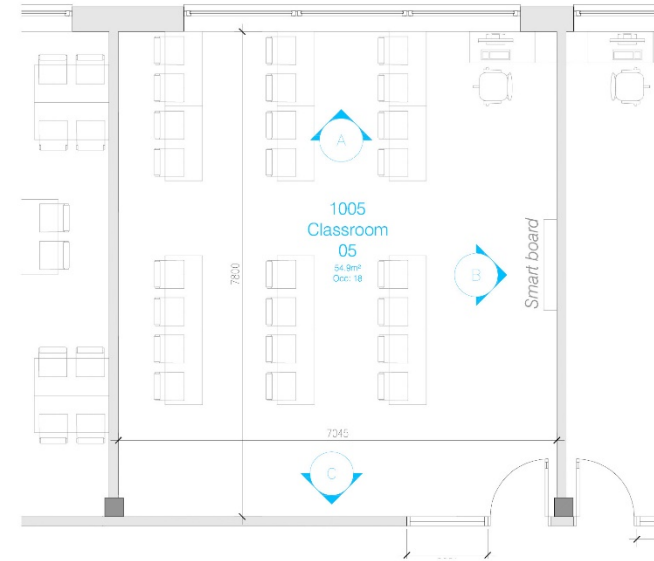
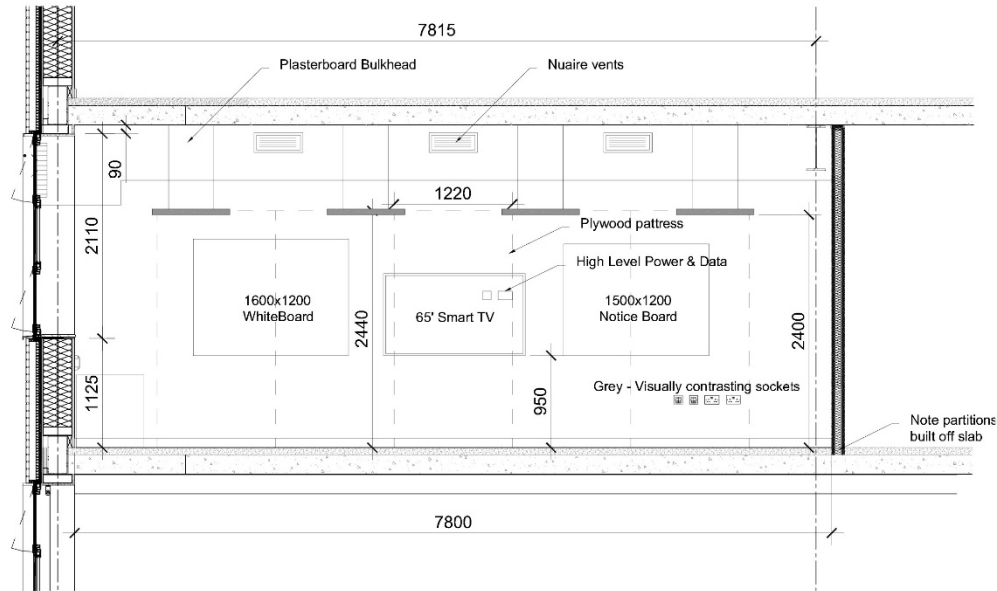
Elevation A - External Wall Elevation
Scale 1:50



Zehnder Radiators



Crank Operated Blind System
Fabric - Light Grey



Elevation B - Teaching Wall Elevation
Scale 1:50



Whiteboard



White Smart Tech TV's



Grey Display Boards

G

1

2

3

Access & Egress – Fire Strategy

The fire strategy includes for the possible simultaneous evacuation of Trinity and Lambeth, this means that in the event of a fire Trinity students will be able to escape through the Lambeth College spaces and Lambeth College will be able to escape through Trinity Spaces if needed. **It is important that corridor areas are kept clear at all times to allow for this eventuality.**

The doors between Trinity and Lambeth College areas operate on a mag lock hold shut system with the doors only releasing in the event of a fire alarm. A “green box” manual override is provided to each of these doors which will de-activate the maglock in an emergency situation. A cover and screecher alarm is being provided to these green boxes to help prevent misuse.

Access & Egress

Staff and students on ground floor will be able to exit the building using the doors in the Kitchen, Refectory, Stairwell and Main Entrance. All these doors with the exception of the main entrance door will be mag-lock hold shut in line with the College's security strategy, they will also be linked to the alarm system with a magnetic door contact on the door.

In the event of a fire the turnstiles and winglock gate will open to allow for easier egress through the main entrance doors.

Students on upper floors will escape primarily using the Lambeth college escape stair. Fire fighters may also use this stair and associated dry riser. In the event that this route is blocked staff and students will escape through Trinity demise. Therefore if one of these facilities is being occupied whilst the other is closed access through will need to be available at all times.



