

WARSAH MARITIME ACADEMY CADET TRAINING RELOCATION PROJECT – UPDATE 13 JUNE 2017

Welcome to our third newsletter setting out the progress we are making in preparation for the relocation of the Warsash Maritime Academy Cadet Training Provision this coming September.

We will be issuing progress updates via this newsletter format every two weeks over the summer to keep you up to speed with the works and preparations.

We welcome any feedback from you on the content of this newsletter and would be delighted to answer any questions you may have as we complete these exciting works in the weeks ahead.



Please send any comments, questions and feedback to: John Bazley john.bazley@solent.ac.uk or Syamantak Bhattacharya Syamantak.bhattacharya@solent.ac.uk

PROJECT PROGRESS UPDATE

Progress Update

In the last few weeks, the following key activities have been completed:

- Midas have completed the full strip-out of the ground floor of the Austen building and have started block work for the new welding-shop and engineering class;
- The existing roller shutter has been removed and the opening for the new garage door has been created;
- The acoustic ceiling in the workshop area is being installed along with some of the services and their containments; and,
- Midas also completed the strip-out and have started the installation of new services on the first floor.

City College's old configuration of the ground floor (March 2017)



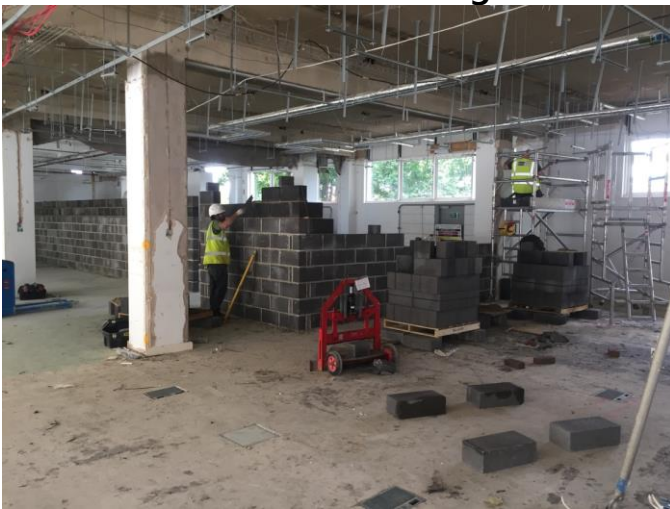
Midas partial strip-out of the ground floor (23 May 2017)



Midas strip-out of the ground floor, new welding-shop (12 June 2017)



Building of the new welding-shop



Opening for the new garage door



New walls for the engineering classroom



City College's old configuration of the first floor (March 2017)



Midas strip-out of the first floor (12 June 2017)

Space for the two new large classrooms

Protection for existing classrooms



The new independent learning area



Next Steps

In the next 2 weeks Midas are planning to:

- complete the block work for the welding workshop as well as the spaces for administration and laboratories;
- install mechanical and electrical services to the changing rooms and toilets;
- complete the acoustic ceiling to the welding workshop;
- create the concrete ramp to the rear of the building and build out the base to the new gas stall;
- complete the block work to infill the old roller shutter area;
- complete the services to the ground and first floors;
- build partitioning on the first floor to divide the space in to two classrooms and other areas; and,
- start the strip-out on the second floor,

Frequently Asked Questions (FAQs):

In this section, we will capture frequently asked questions and provide responses to you throughout the duration of the works.

1) When are the works due to be completed?

Most of the building works would have been completed by the first week of August to allow for the installation of brand new Audio Visual screens and the installation of new furniture throughout. All work, including IT and furniture installation, are due to be completed by the end of August to allow for staff familiarisation before teaching commences.

2) What will happen if the works are not completed on time?

The contractor and project team are confident that works will be completed on time. The contractor's programme does not rely on working in the evening and weekend and this remains an option which will be utilised if at any time the works programme look as though it might slip.

3) Will Warsash Maritime Academy learners be able to use the other facilities of the University nearby?

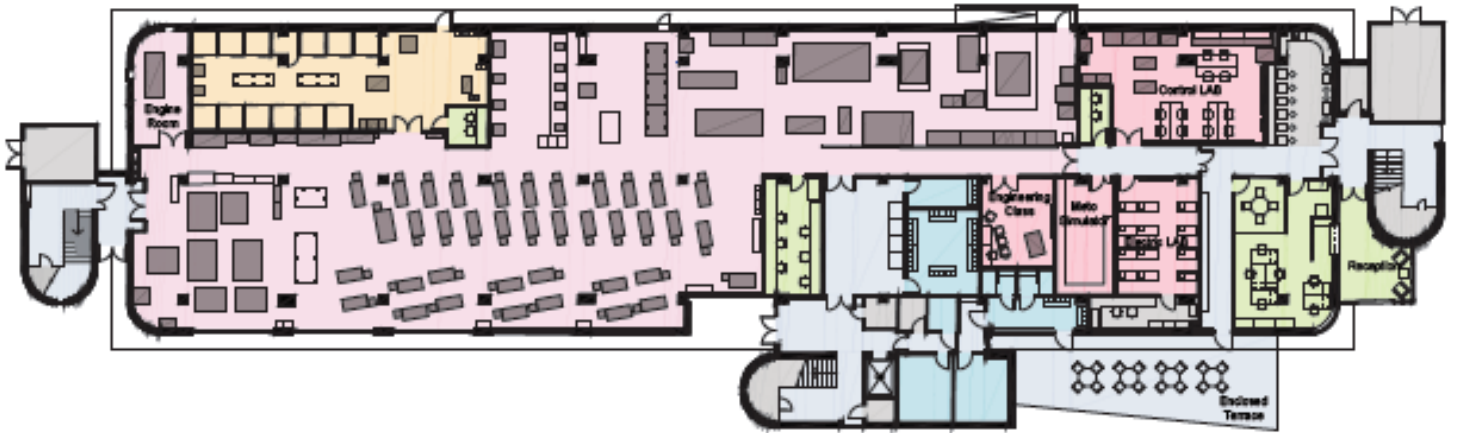
Yes – Warsash Maritime Academy learners will have access to the full range of student services within the East Park Terrace Campus of the University.

NEW MARINE ENGINE - COMING SOON!

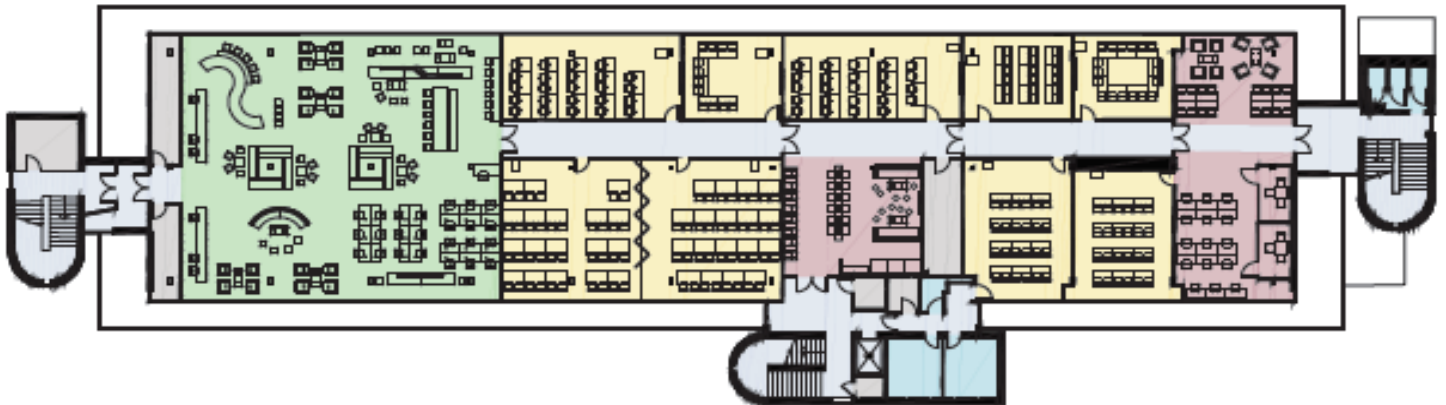


PROPOSED FLOOR PLANS FOR WMA

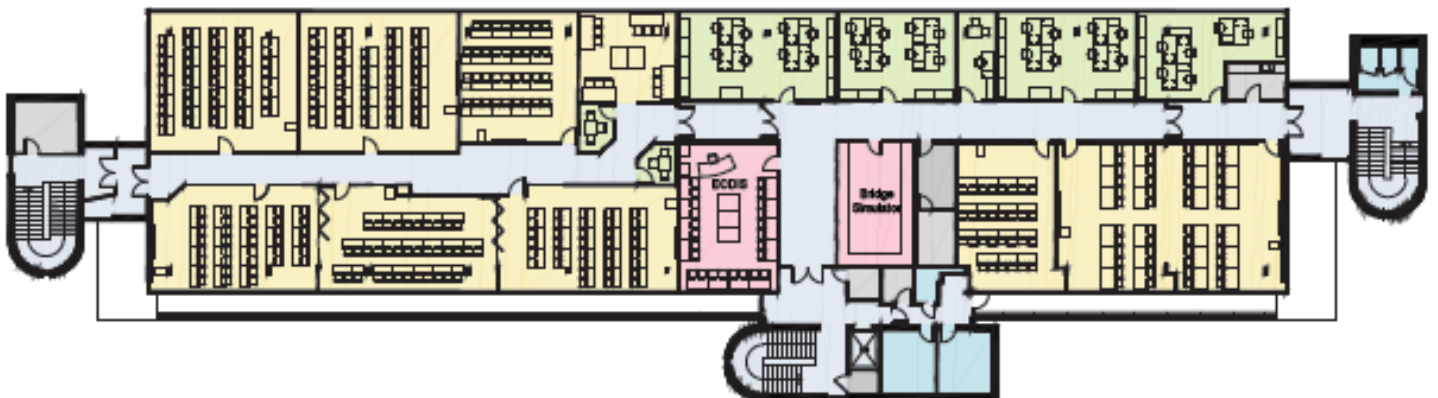
Ground Floor



First Floor



Second Floor



NEW LEARNING SPACES PROPOSED FOR WMA



COMING SOON!

This project is being delivered by the following partners:



Warsash Maritime Academy
Client



MIDAS
Main Contractor



AECOM
Project Managers and Cost Consultants



Southampton Solent University
Estates and IT Project Management



Peter Marsh Consulting
Client Advisors