

In this issue:

- Outdoor learning
- Buildings update
- Weekends
- Themed curriculum
- National events
- Snowy days!

www.loddonschool.org

Further developing outdoor learning

Our outdoor learning opportunities continue to expand and we are continually looking for new ways to engage the children in learning activities outdoors. We have taken part in a number of national events throughout the winter months, with National Tree dressing day, Outdoor Literacy Day and the Big Garden Bird watching week. I am delighted to say that due to a generous donation we are able to purchase a new outdoor learning room which will be heated and have a toilet. The learning space should be erected by Easter and we will also be moving the poly tunnel and replacing it to make a new improved Horticultural learning area closer to the paddocks. Our outdoor learning days which focus on numeracy or literacy showcase the new activities for all the staff so learning never needs to stop weekday or weekend. The literacy day was also a wonderful opportunity to introduce the new Bantam chickens to some of the children.

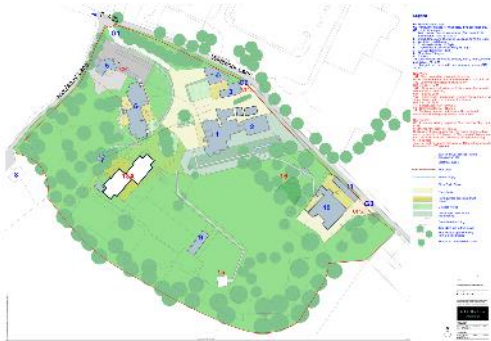


National Tree Dressing Day, and our Literacy day continued to provide new learning opportunities for all.

"Staff will take learning to pupils or adapt their planned learning to meet the needs of new pupils who join experiences."

Building Project Update

Phase	Works Planned	Potential Completion
Phase 1	Building two new houses for pupils who are currently based at Homelands and Willow Green. We will learn lessons from the design and construction of Cherrywood in the creation of these new homes.	Spring 2020
	Relocation of part of the car park and landscaping at the front of the main house.	Summer 2020
	Remodel and refurbish parts of Willow Green to allow for the move of the therapies and other activities currently located in the Coach House. We will also relocate the sensory garden as part of this phase of works.	Winter 2020
Phase 2	Demolition of the current Coach House to allow us to build three new "junior houses" to allow us to move all three houses that are currently based in the Main House so that they have purpose-built accommodation with en-suite bathrooms and easier access to outside space.	Spring 2022
Phase 3	Redevelop the Main House for staff and administration on first and second floors to allow us to bring all of the support teams together and provide more quality space for staff accommodation.	Winter 2022
	This will then be followed by the demolition of St Michaels and the relocation of the rest of the car park to this part of the estate. This will give us a car-free centre to the Loddon School.	Summer 2023
	The final phase of works will see us landscape where the car park is to provide a new "village green" to connect each of the schools with the beautiful open space that we benefit from on the site.	Autumn 2023



Last year we worked with the team at Peter Marsh Consulting (PMc) to develop a long-term plan to help us develop our estate in a way that will help us best meet the needs of our young people. The five year plan was approved by the Trustees in October 2018; it will bring all of the school's pupils onto the main site and also out of the Main House into purpose-built homes designed to meet their care and learning needs.

Work on delivering Phase One has already commenced with the recent appointment of the Project Management (PMc) and our new architects (ArchitecturePLB) who are both based in Winchester. We are all very excited to get started on the next phase of the work. In January and February the project team will be holding a number of workshops to develop the brief and test ideas and designs. We want to use this opportunity to create the best possible spaces for our young people. The project team are committed to seeking input and ideas from the Loddon staff team and to further observe how we use our existing spaces so that together we design new buildings that respond to the unique and different needs of the young people who live and learn at The Loddon School.

Peter, Jenn and Eli

The PMc Team

For any questions on the delivery of this project please feel free to email LODDON@petermarshconsulting.com.



Themed learning

Last term we explored the theme of Transport and were delighted to have our own steam train for part of our Christmas celebrations. Thanks to Howard our Osteopath (and also a keen model steam train owner) who spent a full day as Engine driver as the Loddon Polar Express carried our children from Loddon School Station to Santa's Grotto. So it was train ride and a present from Santa in one major activity, which was enjoyed by all. We have booked Howard again this year, but we will add something extra to the experience as we would not wish to be seen as boring!



We also have looked for new community trips to add to our weekly visits. We have had a special effort to find the healthy options and Cycles4All is proving to be a very popular option. Pavilion on the Park is a charity based in the urban country park in Eastleigh. They have a wide variety of cycles especially suitable for our children to ride with their member of staff. The paths throughout the park offer a variety of challenges, many are wide and flat, others on gentle slopes or narrower paths. There is a major one up a hill, which is a great ride down for the exhausted member of staff who generally has done most of the cycling to get up the hill, the air rushing passed one's face on the way down is a favourite sensory experience.



“The extensive learning environment outside is delightful. It provides a multitude of learning opportunities. Many pupils flourish while learning outside. Great thought has been given to the design and use of outside spaces, such as the sensory garden.” Ofsted 2018



The National Big Garden Birdwatch week provided activities both for the weekend and throughout the week with many craft activities to make bird boxes (spot them on the nature trail), bird seed feeders made from a variety of seeds and lard. We also explored the types of plants that provide good habitats for the birds as well as seeing if we could spot different birds (real and picture).



Our science curriculum is delivered through the Discovery Club, and also through the Messy sensory curriculum. Exploring different shapes, how they fit together and move together has been key to much of our learning currently. Wet substances and dry materials ranging from water beads to flour had aided our learning.



National Storytelling week gave us a great excuse to use our story bags, our sensory story materials and especially our puppets. Our focus this term has been on reading and writing skills with a focus on Dr. Seuss stories. Our OT has also been able to work with some of the children to introduce special pen grips which will help them to use the pincer grip as well as writing boards to introduce writing skills.



Our weekends this past month have provided a range of seasons to experience. Warmer weekends have allowed us to visit a variety of places to see wildlife, and to go on long walks. The sudden snowfall in the Basingstoke area the other weekend brought the town to a standstill so it was lucky that the snow gave us a new opportunity outdoors. Gridlock 2019 meant that many staff spend the night in school and offices, staff rooms became 'hotel rooms'.



“Pupils’ physical and mental health flourishes at Loddon.” Ofsted 2018

Summer dates for your diary:

Parents Picnic: 6 May

Loddon Festival: 28 June

Sports and Staff Award Day: 19 July



@theloddonschool



The Loddon School



www.loddonschool.org