



NEWSLETTER

Peter Marsh Consulting Ltd.

JANUARY 2022

10 YEARS OF PMc

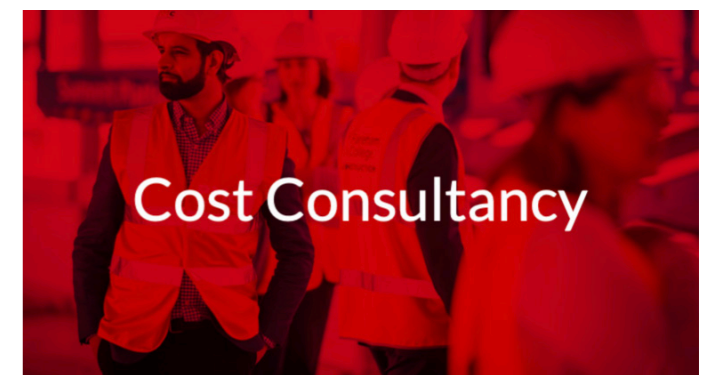
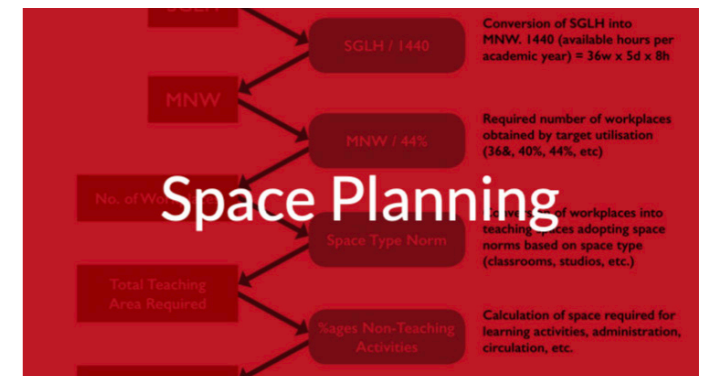
2021 marked our tenth birthday. This newsletter summarises some of our activity and achievements in 2021. We work with a range of brilliant clients supporting their delivery of education and wider public services - helping to create spaces and shape futures.

We exist to make a difference. We've hugely enjoyed the last year despite all the challenges of COVID. We have had the privilege of working on a wide range of projects from the strategic development to the on-site delivery stages. Most of our work is in the further education sector; and, we continue to work with a wider range of higher education, local authority, government and international clients too.

As we moved into 2022 Robert and I agreed to transfer PMc from a Director owned company to one owned by an Employee Ownership Trust (EOT) and, as a result, Peter Marsh Consulting Employee Ownership Trust Ltd now owns a majority of the shares in PMc Ltd. This means that all of the team at PMc now have a stronger and more direct stake in the future of the company which we believe will help us continue to grow and make a difference through the next ten years to 2032.

Peter Marsh
Managing Director

OUR SERVICES



Creating Spaces : Shaping Futures

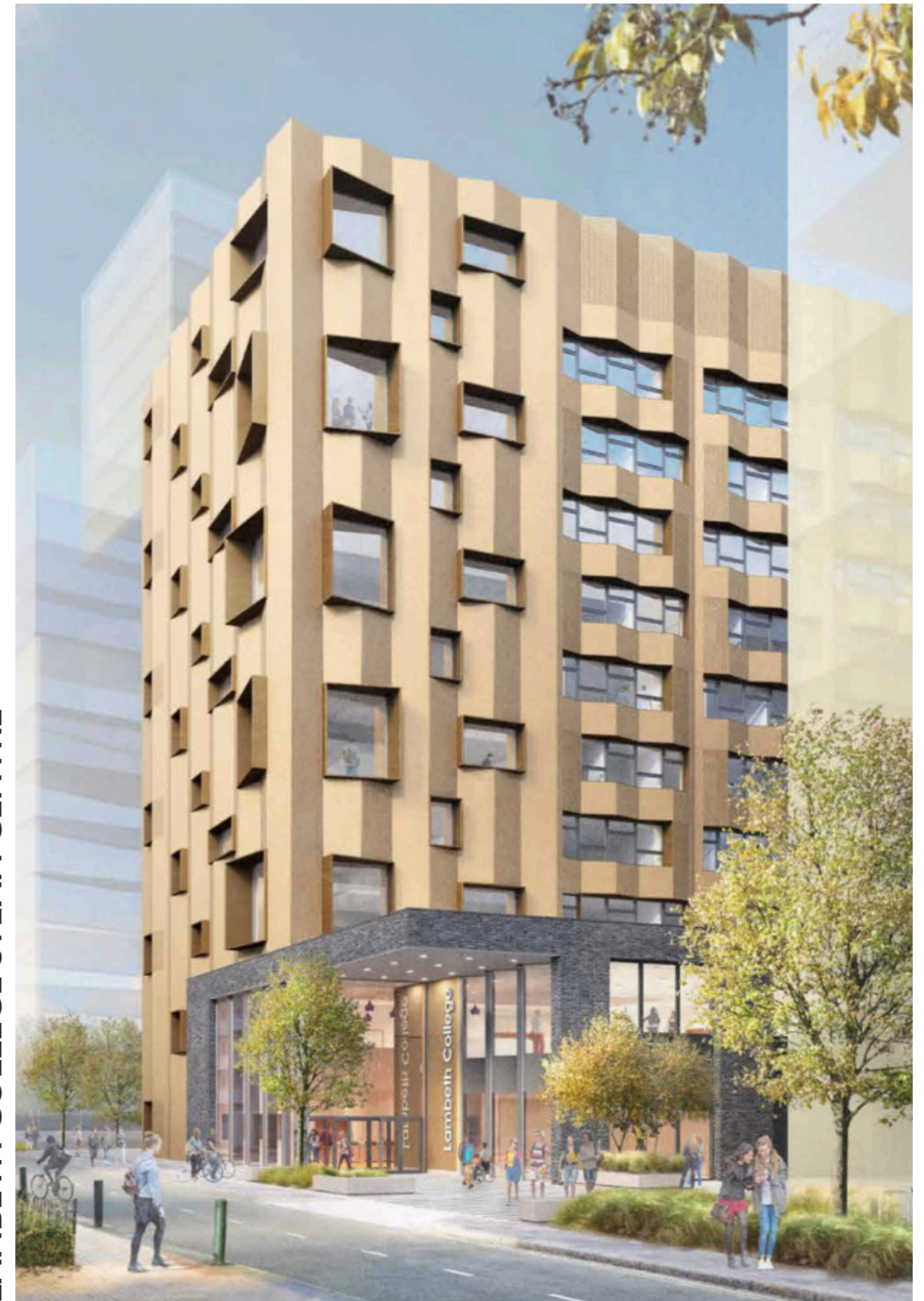
JANUARY 2021

Works on South Bank Technical College's new STEAM centre at Vauxhall commenced. Planning permission was secured in February 2021 and we were pleased to see Grahams appointed to create this landmark 10,000 m² building which is being 50% funded by the Mayor of London. The building was designed by APLB and the on-site Technical advisory team is now led by Rock Townsend. PMc wrote the estate strategy for the College and the successful funding bid to the GLA. We are now project managers and the employers agent for the on-site delivery of the project. The enabling works started on site in January 2021 and the building is due to completion mid-September 2022.

FEBRUARY & MARCH 2021

This month saw the deadline for the submission of Further Education Transformation Fund Stage 1 Bids. We worked with the majority of our FE clients to develop and submit bids which included condition assessment, space planning, options assessment and development of estates strategies and concept designs. The projects we helped to support included substantial refurbishment projects through to new build proposals that had already secured match funding as part of the governments Future High Street Fund.

LAMBETH COLLEGE STEAM CENTRE



Contractor: GRAHAM construction
Architects: Architecture PLB

APRIL 2021

In April Rob's two-and-a-half-year interim executive leadership role at City College, Southampton concluded. As part of this assignment Rob acted as Vice Principal (Curriculum and Quality) and was responsible for curriculum planning; quality assurance and improvement; and, student support services. In addition, he acted as nominee for the College's full inspection and monitoring visits. Rob also actively supported the College when exploring options for its long-term viability with strategic partners and agencies.

We completed work on the £1.3m transformation of the Stevens building at Alton campus HSDC. This project was funded by the Enterprise M3 LEP, concept design by PMc, Stage 3 design by Rock Townsend and delivered by Overbury. The new centre provides 126 student learning spaces with open plan studios, industry standard furniture and collaboration project zones.

We were appointed by South Staffordshire College to act as project managers through RIBA Stage 2 for their project to replace their existing Tamworth Centre with a 6,359 m² new build in the town centre. This project is being part funded through a successful Future High Street Funding bid, which we helped write.

We completed the handover of the Loddon School Project and were delighted to have been able to work with the School to develop two stunning homes for young people. Loddon learners often have some of the most complex learning needs and live in school 365 days a year, 24 hours a day. The new homes provide a place for Loddon learners to live, learn and thrive. Our first stage of work with the Loddon team was to develop a long term estates strategy of which Forest Oak is phase 1. We then worked with the school to appoint an architect - APLB to complete Stage 3 designs; we managed the contractor tender process which resulted in the appointment of Ascia Construction to complete the design.

HSDC ALTON



Concept Design: PMc

RIBA Stage 3 Architects: Rock Townsend Architects

THE LODDON SCHOOL



Estates Strategy and Client Advisor: PMc Ltd
Architects: Architecture PLB

MAY 2021

We completed the RIBA Stage 2 designs for the new High Wycombe campus for the Buckinghamshire College Group to allow the start of the pre planning application process in which we received very positive feedback from the local planning authority.

We completed Solent University Estates Strategy 2020 – 2030 which set out a long – term estates plan for their existing estate across the City of Southampton. This strategy will ensure that the University's future provision is housed within high-quality teaching and learning spaces and, that students and staff are inspired by the spaces in which they work.

The 'topping out' ceremony for the new town hall for Tower Hamlets took place on Friday 14th May marking the completion of the highest structural point of the building. The new Town Hall is being built on the site of the former Royal London Hospital on Whitechapel Road which has been vacant since 2013. We are providing strategic client advice on this major project; construction is being led by Bouygues UK with AHMM the appointed architect.

“Our new Town Hall will bring the historic Royal Hospital site in Whitechapel back into community use, so once again the 250 year old building will serve the people of Tower Hamlets. Reaching this milestone now shows the project is making good progress, so we are on track to make the savings this project will deliver, as well as provide a fantastic new space for residents to access services.”

John Biggs
Mayor of Tower Hamlets

BUCKINGHAMSHIRE COLLEGE GROUP



Estates Strategy and Client Advisor: PMc Ltd
Architects: Rock Townsend Architects

TOWER HAMLETS TOWN HALL



Strategic Client Advisor: PMc Ltd
Contractor: Bouygues
Architects: AHMM

JUNE & JULY 2021

In 2021 we supported South Staffordshire College on the project to replace the existing Tamworth Centre with a 6,359 m2 new build in the town centre. We acted as project managers through RIBA Stage 2, which took place between April and July, and client project managers and strategic client advisors through RIBA Stage 3, which commenced in October. We worked with the College to appoint Ayre Chamberlain Gaunt (ACG) architects at Stage 2 and McBains as multi-disciplinary design team - retaining ACG - at Stage 3. Following the announcement in March that Tamworth Borough Council had secured £10.5m Future High Street Funding towards the project, PMc has been working to secure the remainder of the funding, including completing a Further Education Capital Transformation Fund (FECTF) bid on behalf of the College. This exciting project will enable the College to meet the needs and expectations of learners and the wider community by creating transformational new FE facilities in the town centre with flexible teaching and learning spaces which are able to respond to the changing needs of future curriculum.

During 2021, we worked with Capital City College Group alongside Atkins and MCMa to develop a masterplan for the modernisation of their estate which is located at Victoria, King's Cross, Regent's Park, Angel, Holloway, Finsbury Park, Tottenham and Enfield. We developed and prioritised a range of options at RIBA Stage 1 and took a smaller number of options forward to RIBA Stage 2. We then completed work on the costing and programme for each option and agreed a framework for their prioritisation as and when external funding becomes available. Finally, in January 2022 we issued a draft of the masterplan for approval by the Group.

We completed our work on an Estates Strategy for the Hadlow campus that now forms part of North Kent College. The college was required to develop and approve an estates strategy as a condition of the transfer of the campus after it was transferred to North Kent College following a period of control by administrators appointed by the Department for Education. Our work included a review of condition, functionality, space needs and options for further improvement of the estate in the short, medium and long term.

SOUTH STAFFORDSHIRE COLLEGE



AUGUST 2021

In Summer 2021 we completed five refurbishment projects in Colleges as part of the governments continued investment in T-Level facilities and expansion of 16-19 places. The projects included:

- **Buckinghamshire College Group** - The £1.3m project completed by Willmott Dixon Interiors included the creation of three new digital teaching spaces on the Aylesbury campus and one on the Amersham campus for the Digital T Level, a mock nursery space to facilitate the early years T level on both the Aylesbury and Flackwell Heath campuses, a mock hospital ward to facilitate the Health and Science T level on the Aylesbury and Flackwell Heath campuses, replacement of all the lights in the circulation spaces to LED's on the Aylesbury campus and the refurbishment of all the toilets on the Aylesbury campus.
- **HSDC Alton Campus** - the completion of a mock hospital suite and associated teaching spaces to facilitate the Health and Science T level route.
- **HSDC South Downs Campus** - Willmott Dixon Interiors completed the refurbishment of three science labs and the creation of a mock hospital ward and home set up to facilitate the delivery of the Health and Science T Level route.
- **Fareham College** - the project was completed to deliver the Health and Science T Level. We worked with the College and its staff to complete the design and procure a contractor. Ascia Construction were appointed to complete the refurbishment works with the total project budget of £500k.
- **The Henley College** - the project saw the refurbishment of the whole R2 building on the Colleges Rotherfield Campus. The building was fully refurbished including classrooms, communal areas, toilets and the inclusion of an external disabled access ramp. We worked with the Colleges Sports and Public Health leads to complete the design.

THE HENLEY COLLEGE



Concept Design: PMc Ltd

FAREHAM COLLEGE



Concept Design: PMc Ltd

HSDC SOUTH DOWNS



Concept Design: PMc Ltd
Architects: Willmott Dixon Interiors

SEPTEMBER 2021

We completed the refurbishment of c.600m² of the Austen building at HSDC Alton campus to produce the HSDC Alton Independence Hub and allow the College to provide for learners with SEN requirements. This project was 100% funded by Hampshire County Council. We worked with LST projects and Rock Townsend Architects to design and build the Independence Hub and even took on role of landscape gardeners completing some hands-on work in the new Sensory Garden at the College.

Following our work for BDO LLP for the Strategic Estates Review of West London College, we were directly appointed by the College to formulate a Estates Strategy 2021 – 2026 to support the College’s curriculum strategy in the medium term and to ensure that, by 2026 the College’s estate is sustainable and appropriate to support the College’s vision and plans to grow.

HSDC ALTON INDEPENDENCE HUB



Architects: Rock Townsend Architects
Contractor: LST Projects

HSDC ALTON INDEPENDENCE HUB



OCTOBER 2021

We presented the draft Estates Strategy to the Shrewsbury College Governors which set out our detailed analysis of space needs, condition and investment needs of their existing three campuses and evaluated a range of options for the future development of the estate.

This month also saw the deadline for the submission of Further Education Transformation Fund Stage 2 Bids. We wrote the funding bids and project managed the RIBA Stage 2 designs for eight projects with a total project value of £167m.

In this month we also learnt that Runshaw College were successful in the 16-19 Growth fund bid that we wrote the bid for of the bid. This project was developed following our earlier Estates Strategy work at the College in the Spring of 2021. The grant of £3.2m will create a new building on the Leyland campus to provide ten new teaching rooms to support the continued growth of the College.

The Loddon School Phase 2 planning approval - Following the successful completion of The Loddon School Phase 1 project, we were appointed to manage the planning application for the Phase 2 project. Alongside Re-Format we worked with the College to design three new houses to house 15 children, linked via a communal kitchen and dining area and planning was approved by Basingstoke and Deane Council in October 2021.

Following completion of the Loddon School phase 1 works in April, we were appointed to work with the School on the development of the brief and design for phase 2. Re-Format architects were appointed to complete the RIBA Stage 3 design and submit the planning application for 3 new houses to provide living and learning accommodation for the younger pupils at the school. In October 2021 Basingstoke & Deane Local Planning Authority granted consent for the scheme - we hope to be going out to tender for this project later in 2022.

In October we received confirmation that the 16-19 Growth Fund bid that we submitted to the Department for Education for Runshaw College was approved. This £3.5m grant will help pay for a 1,000 m² new building providing much needed new teaching and learning space at the College's Leyland Campus. The scheme has now started on site and is due for completion in October 2022.

RUNSHAW COLLEGE



Estate Strategy & Bid Writer: PMc Ltd
Architects: DAY Architects

THE LODDON SCHOOL



Estate Strategy & Project Manager: PMc Ltd
Architects: Re-Format

NOVEMBER 2021

This month we secured planning permission for Fareham College for an extension to CEMAST which is the College's Centre for Excellence in Engineering, Manufacturing and Advanced Skills. At the end of 2020, we led the commissioning of a master planning study to review a number of extension options for the CEMAST building. That study was completed by Architecture PLB and arrived at a preferred option which was approved by the College's Senior Management Team and Board. The proposed extension was included as a key strategic project in the subsequent Institute of Technology funding bid (IoT) which was submitted by Solent University with our support. The preferred option has been subsequently developed to RIBA stage 3 with Hampshire County Council Property Services (Architects), RHB Partnership LLP (M&E consultants) and Scott White and Hookins LLP (Structural Consultants) with Peter Marsh Consulting acting as Client Advisors, Project Managers and Cost Consultants. The planning application was submitted to Fareham Borough Council at the end of September 2021 and the application was determined early November 2021.

In November we completed a review of Design Engine's stage 2 pack for The Guernsey Institute project. We originally wrote the estates strategy for the College in 2019; and, we now support the States of Guernsey in the delivery of their education capital projects in an assurance and advisory role. We reviewed the spaces provided within the design pack against the schedule of areas and space planning completed by us during earlier stages of the design process.

DECEMBER 2021

At the end of 2021 we were delighted to hear that the bid that we helped to write for the Solent IOT was successful. This project sees a number of our clients in the Solent region coming together to share resources and collaborate on the creation of a new Institute of Technology serving the maritime, digital and engineering sectors. In 2022 we now enter the pre-award stage and will be developing plans for the £12m refurbishment of spaces at Solent University; HSDC; Isle of Wight College; Eastleigh College; and, a new build extension at CEMAST for Fareham College.

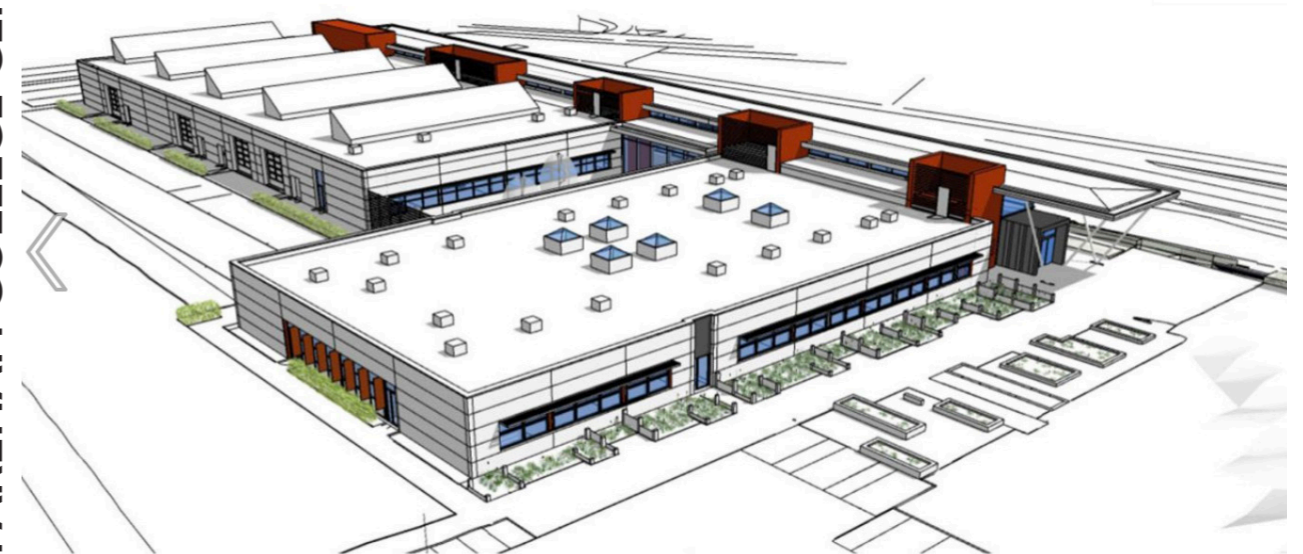
We were also thrilled to be appointed by Brockenhurst College following a competitive interview process to act as project managers and employers agent for a 1,200 new build project that will create a new Independence Hub for high needs learners with funding from Hampshire County Council as well as general purpose classrooms to support continued growth in 16-19 year old learners.

We completed a two assignments for the University of Central Lancashire. The first a health check / assurance review of the UCLAN Estates Strategy and Estate Condition for the Vice-Chancellor. We also completed an assignment supporting the CFO as client advisor on the UCLAN Finance Improvement Project, a two year culture, structure and systems change project.

JANUARY 2022

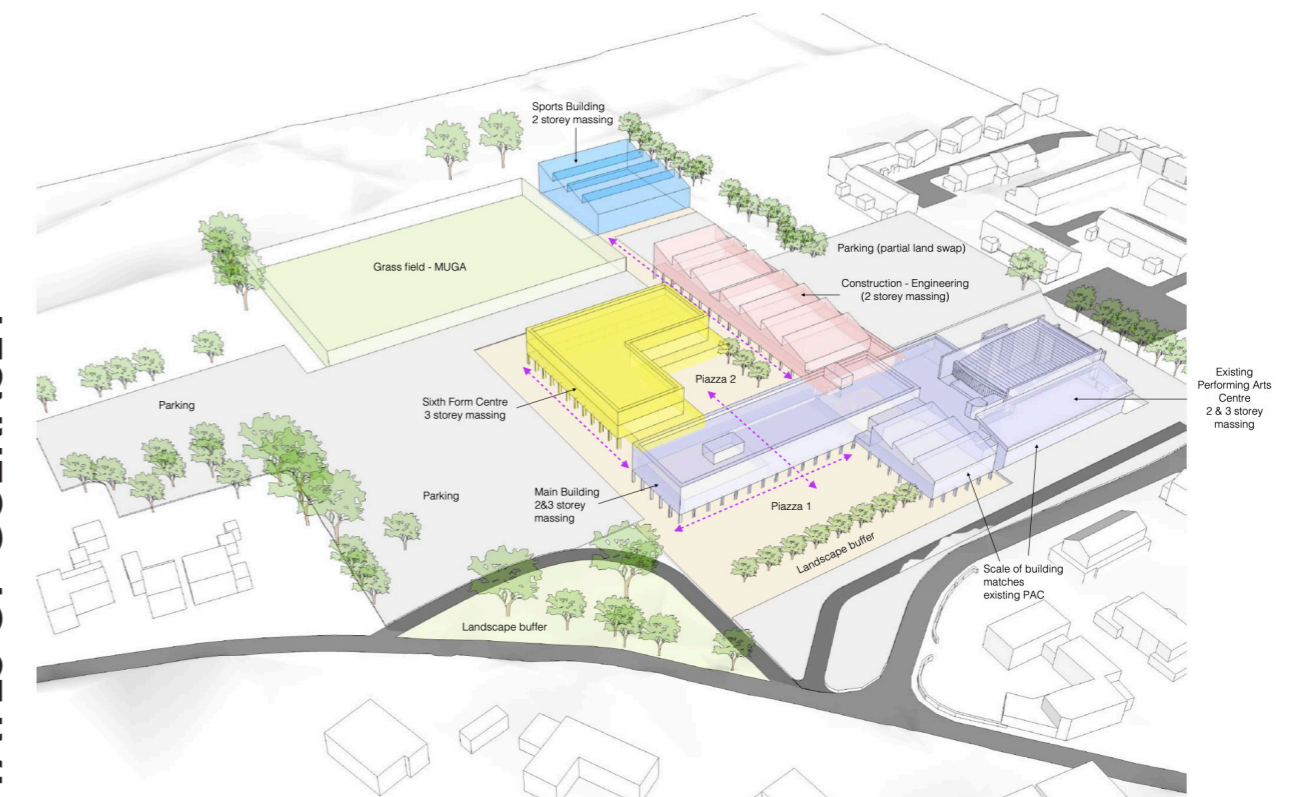
As we move into the New Year, we have now become a mutual employee owned company. Peter and Rob have sold a majority stake of PMc Ltd to Peter Marsh Consulting Employee Ownership Trust Limited (EOT) and a new Trust Board has been appointed to oversee the continued development and growth of the business. The EOT now holds 55% of the shares of PMc Ltd and holds these shares for the benefit of all employees.

FAREHAM COLLEGE CEMAST



Architects: Hampshire County Architects

STATES OF GUERNSEY



Architects: Design Engine

OUR TEAM



PGCE, BA(Hons),
CPFA, FRSA

Peter Marsh
Managing Director



EdD, MProf, MSc, CertEd,
Cert HE, FSTL, FRSA, FCMII

Dr Robert Rees
Director



Selin Kaya
Executive Assistant



MAPM, MCIOB, MSc

Eliana Linares-Gonzalez
Senior Project Manager



MAPM, BA (Hons)

Ben Neville
Senior Project Manager



BEng (Hons)

Tom Cawte
Project Manager



MAPM, BSc (Hons)

Mo Poswall
Senior Project Manager



MAPM, BA (Hons)

George Kenchington
Project Manager



MAPM, BSc (Hons)

Tristan Le Butt
Project Manager



BA (Hons)

George Hounsome
Assistant Project Manager



BA (Hons)

Herbie Rhodes
Project Manager



MSc, BSc

Michael Paltrinieri
Project Manager



FCMA, FCT, CGMA

Steve Carter
Associate Director